

**Care Management
PCMH Committee
Person-Centered Medical Home
Program Update
January 12, 2022**



PCMH Program Status

As of December 31, 2021



Note: 6 Practices have sites in both PCMH & Glide Path Programs

PCMH Approved Practices

PCMH Approved Practices

11/30/21

96

12/31/21

95

New Approved Practices: 0

Completed Glide Path: 0

Termed Practices: 1

PCMH Approved Sites

11/30/21

365

12/31/21

363

New Approved Sites: 0

Completed Glide Path: 1

Sites Termed: 3

PCMH Approved Providers

11/30/21

1,700

12/31/21

1,700

Completed Glide Path: 2

Providers Added: 25

Providers Termed: 27

PCMH Adult & Pediatric Practices

95 PCMH Approved Practices

363
PCMH Approved Sites

38 Internal
Medicine
PCMH
Practices
with **172** Sites

20 Family
Medicine
PCMH
Practices
with **93** Sites

52 Pediatric
PCMH
Practices
with **97** Sites

1 Geriatric
PCMH
Practice
with **1** Site

This data reflects current information through December 31, 2021

*Note: 6 Practices have sites in 3 of the 4 categories & 4 Practices have sites in 2 of the 4 categories.
Sites are counted once.*

PCMH Glide Path Practices

Glide Path Practices

11/30/21

20

12/31/21

19

New Practices: 0
 Completed Glide Path: 1
 Practices Termed: 0

0

Glide Path Renewal Practice

No Change

Glide Path Sites

11/30/21

70

12/31/21

69

New Practice Sites: 0
 Completed Glide Path: 1
 Sites Termed: 0

Glide Path Providers

11/30/21

150

12/31/21

148

New Providers: 0
 Completed Glide Path: 2
 Providers Added: 0
 Providers Termed: 0

0 Sites
0 Providers

No Change

PCMH Accredited Program Participants

Federally Qualified Health Centers (FQHCs) and FQHC look-alikes are program participants*

PCMH Accredited Participants

11/30/21

16

12/31/21

16

No Change

PCMH Accredited Sites

11/30/21

143

12/31/21

143

Sites Added: 0

Sites Terminated: 0

PCMH Accredited Providers

11/30/21

560

12/31/21

564

Providers Added: 17

Providers Terminated: 13

*Federally Qualified Health Centers (FQHCs) and FQHC look-alikes are PCMH program participants if they are pursuing and/or have obtained the Joint Commission Ambulatory Care accreditation with Primary Care Medical Home certification as well as NCQA recognition.

PCMH CY2021 Program Recruitment

Recruitment as of December 31, 2021

- **60 Practice Sites**
 - 30 New Practice Sites
 - 30 New Sites from Current PCMH Practices
- **131 Providers**
 - 76 From New Practice Sites
 - 55 From New Sites from Current PCMH Practices

Practice Recruitment Opportunities

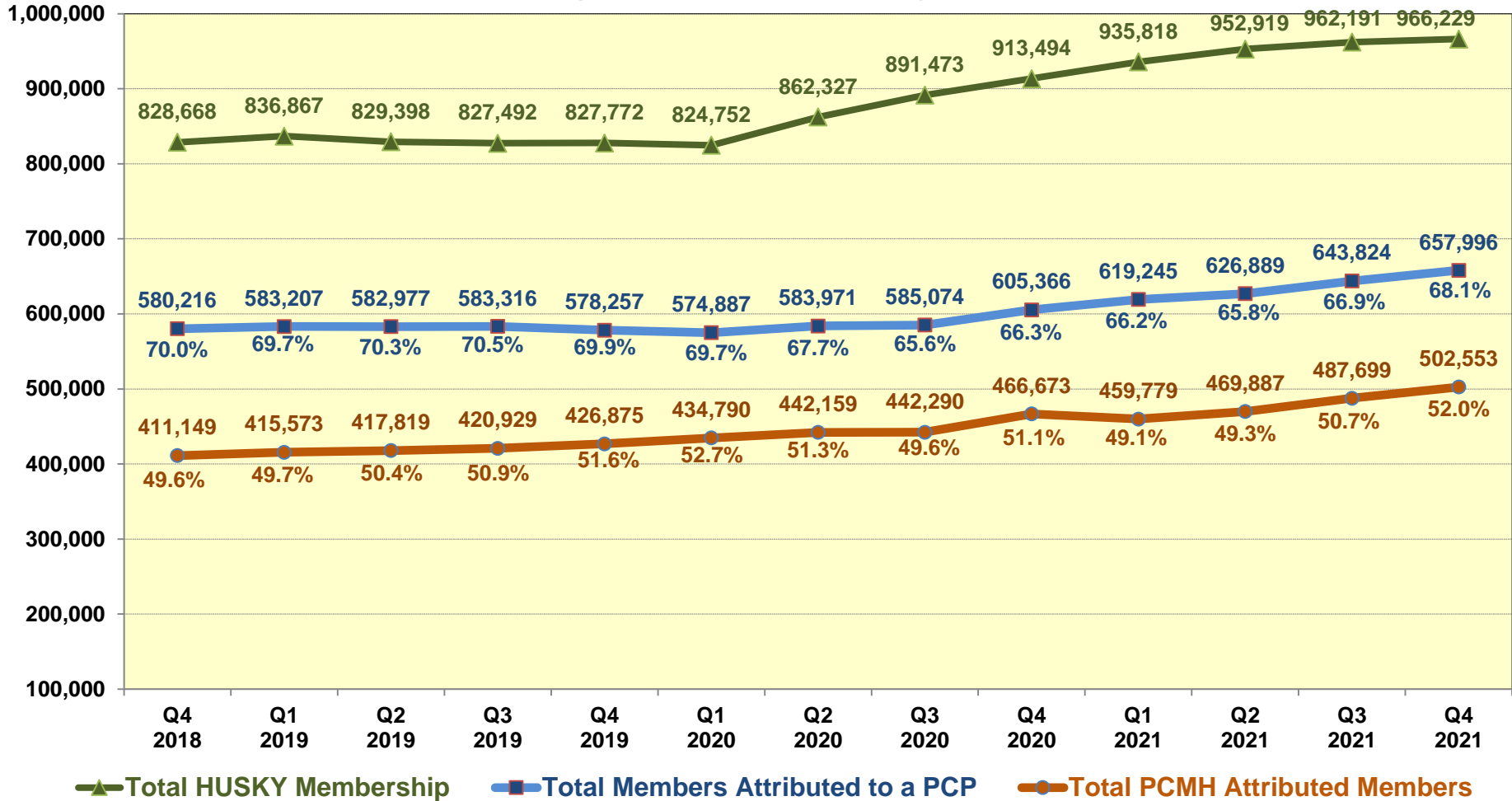
15 Practice Sites

44 Providers

These are eligible primary care practices that are most likely to enroll in the PCMH program in 2022.

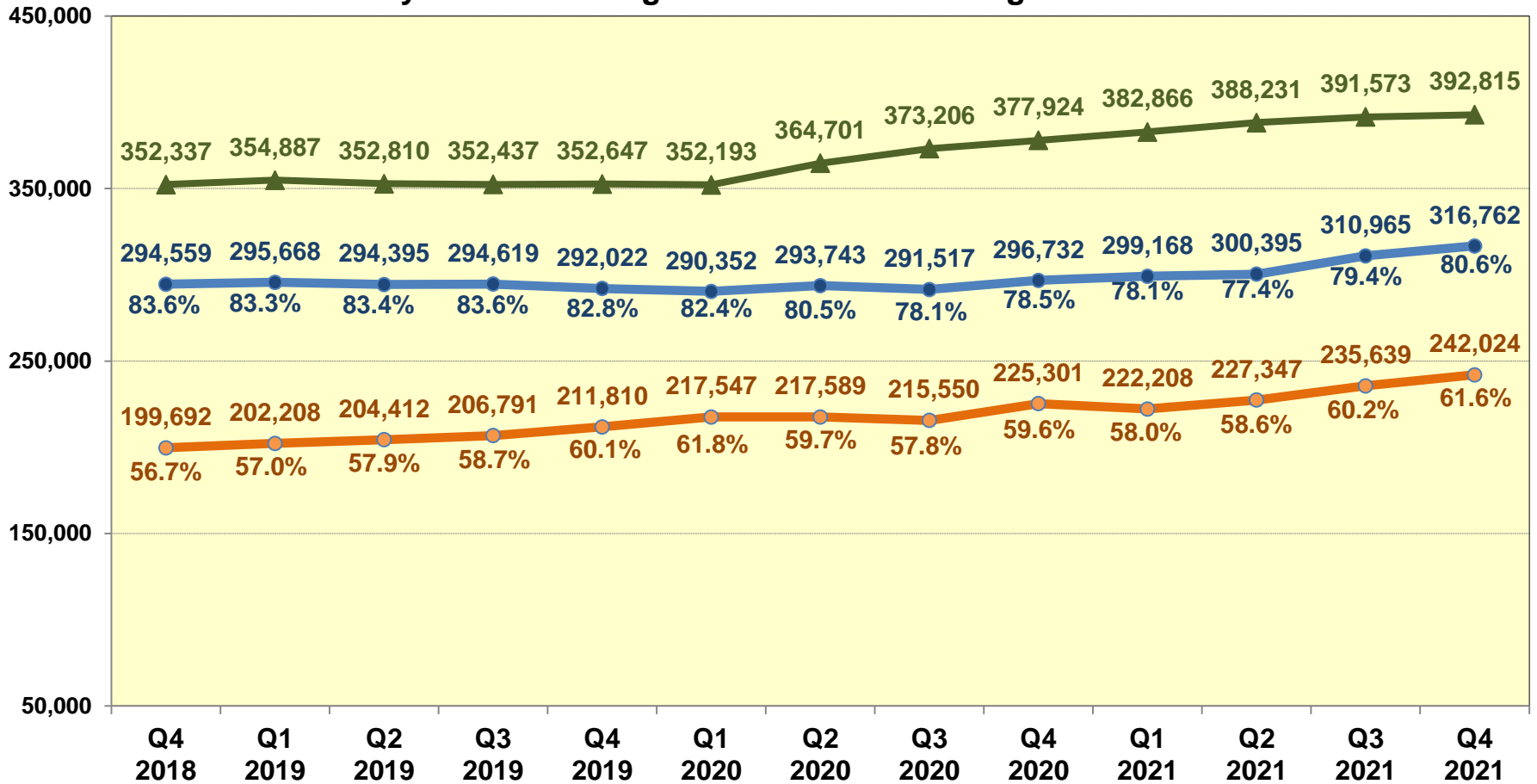
PCMH Program Member Attribution

Summary of Total HUSKY Membership, Total Members Attributed to a PCP and Total PCMH Attributed Members
By Quarter Ending December 2018 through December 2021



PCMH Program CHILD Member Attribution

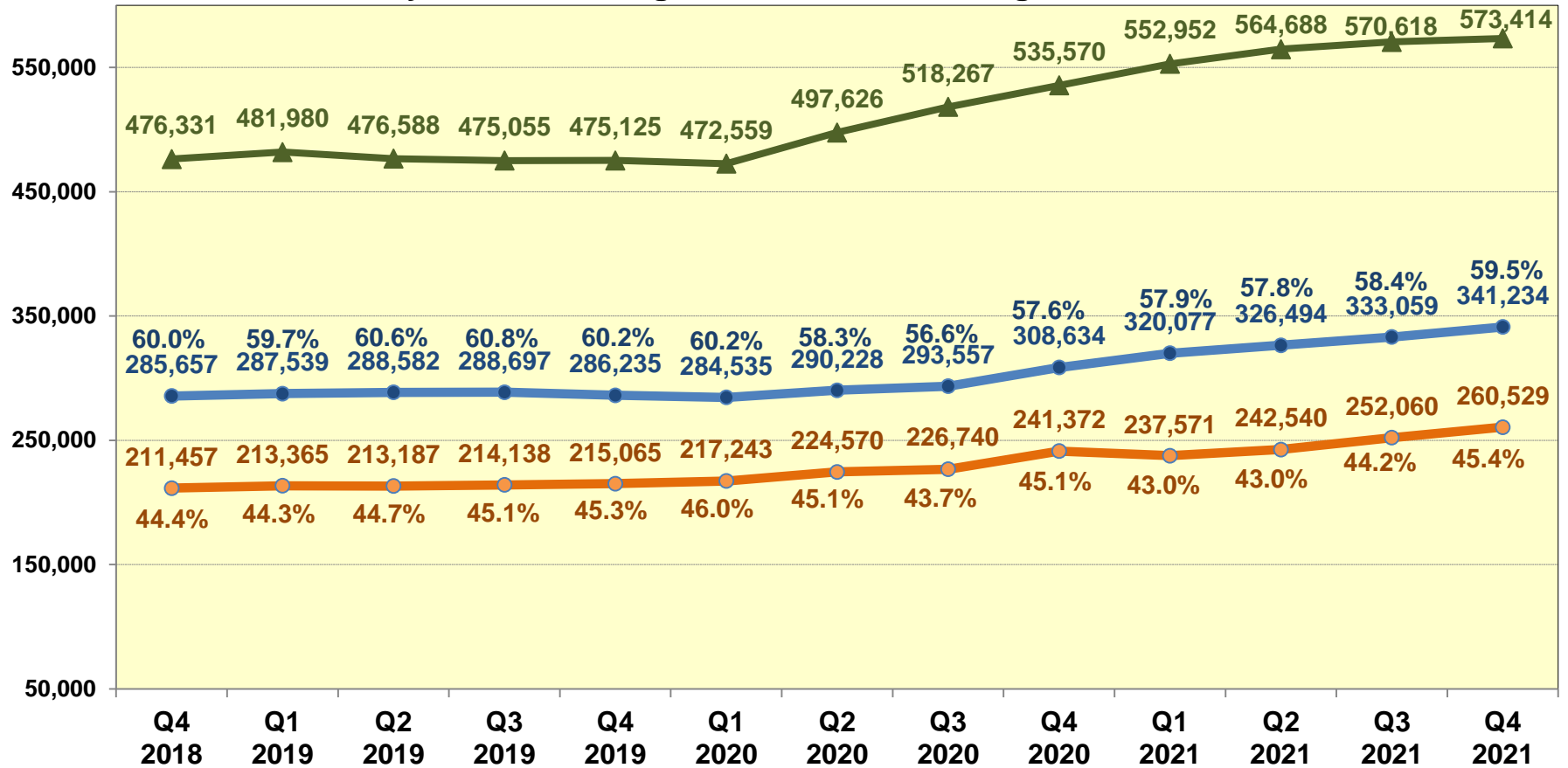
Comparison of Total CHILD Members, Total CHILD Attributed Members, and Total PCMH CHILD Attributed Members
By Quarter Ending December 2018 through December 2021



▲ Total CHILD Members
 ● Total Child Attributed Members
 ○ Total PCMH CHILD Attributed Members

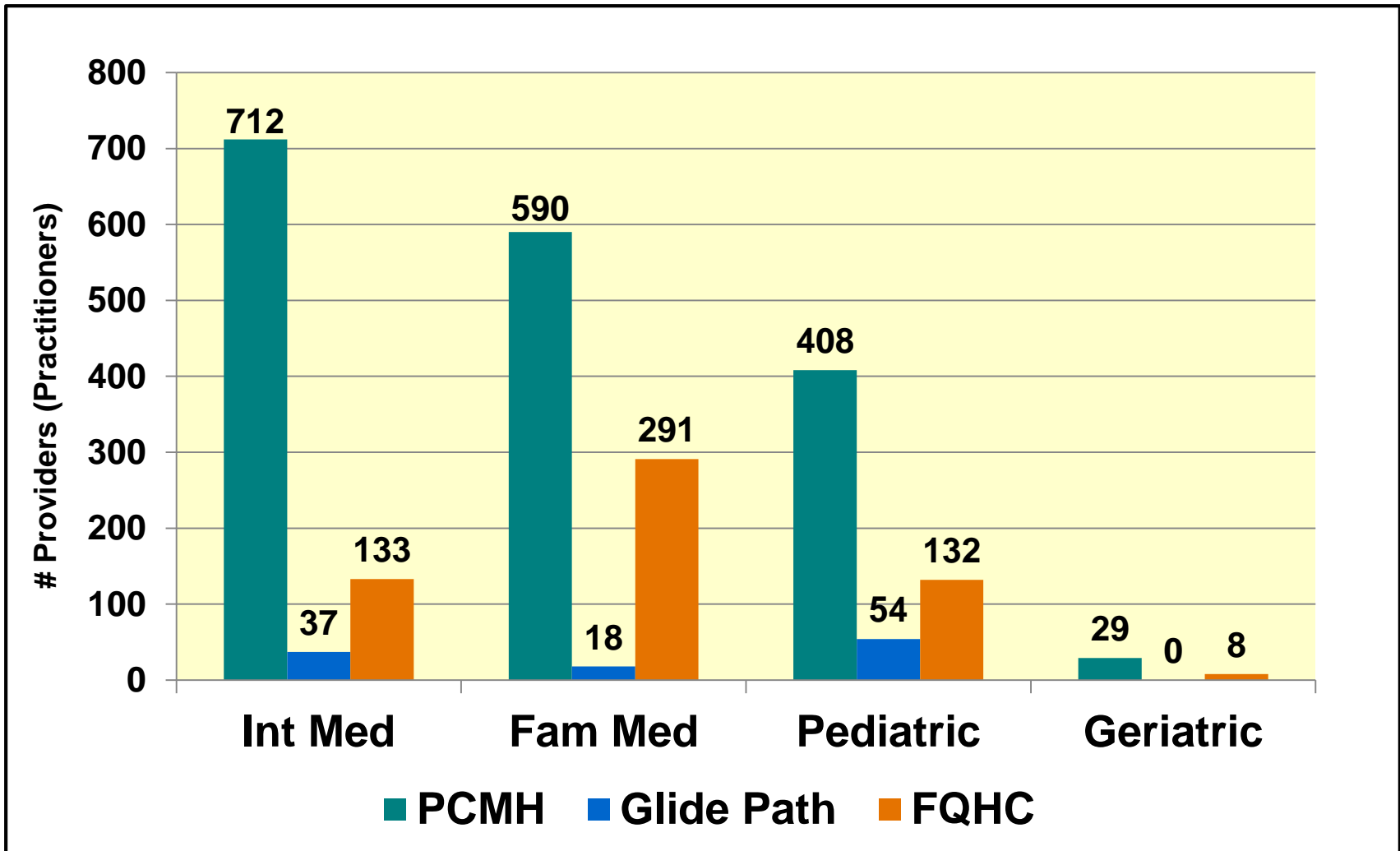
PCMH Program ADULT Member Attribution

Comparison of Total ADULT Members, Total ADULT Attributed Members, and Total PCMH ADULT Attributed Members By Quarter Ending December 2018 through December 2021

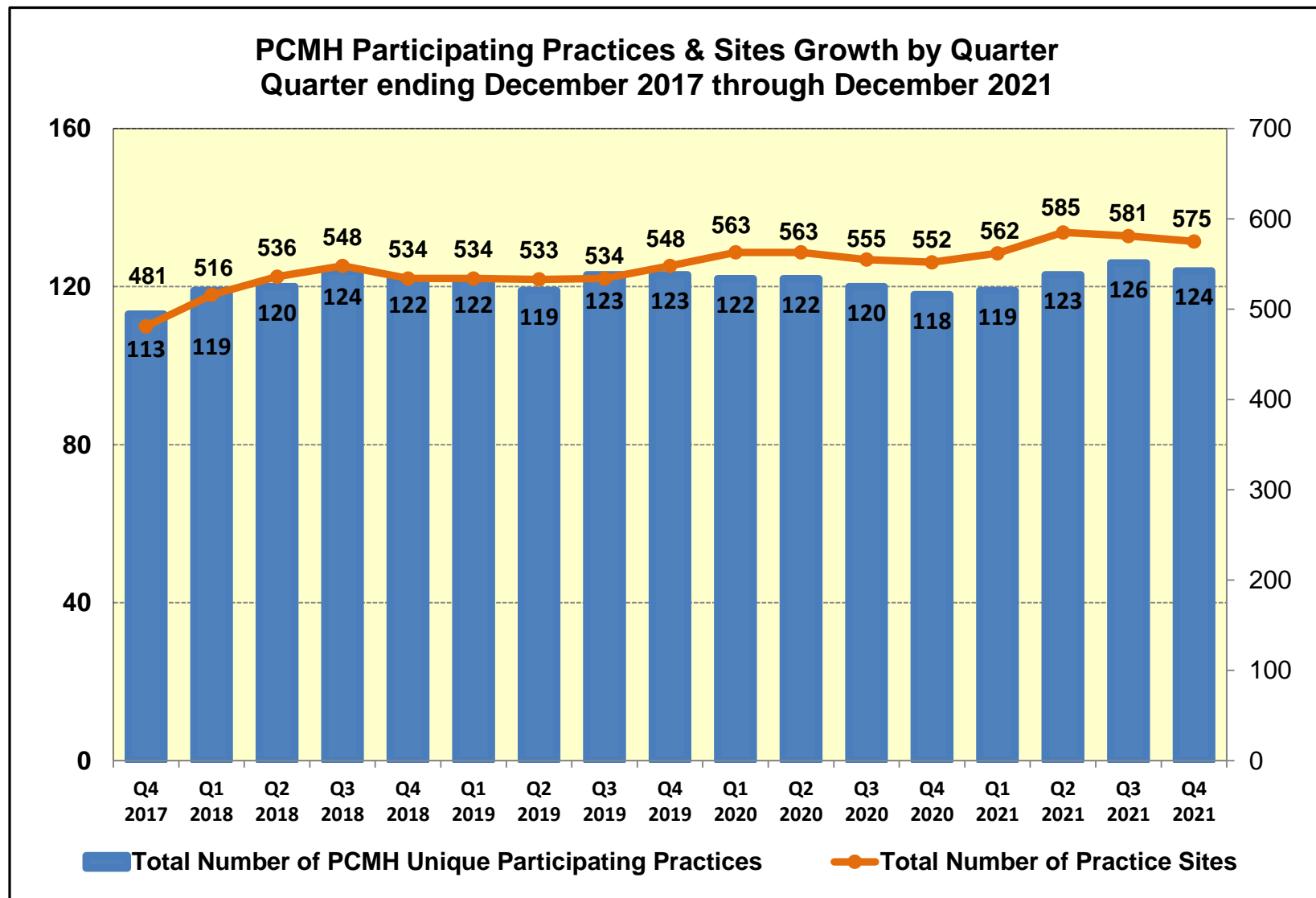


▲ Total ADULT Members
 ● Total Adult Attributed Members
 ○ Total PCMH ADULT Attributed Members

Provider Specialty by PCMH Program Participation as of December 31, 2021

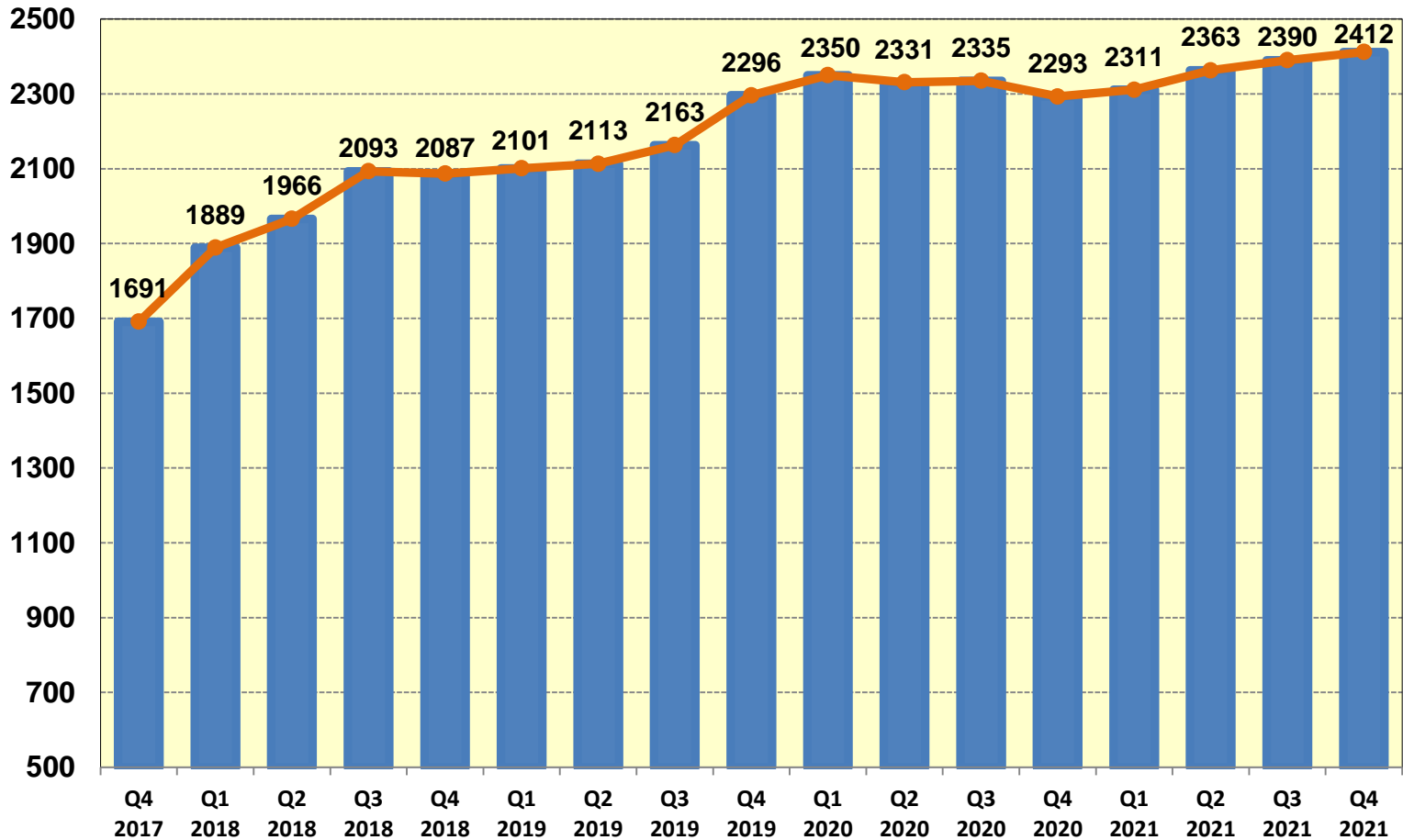


PCMH Program Growth-Practices & Sites



PCMH Program Growth - Providers

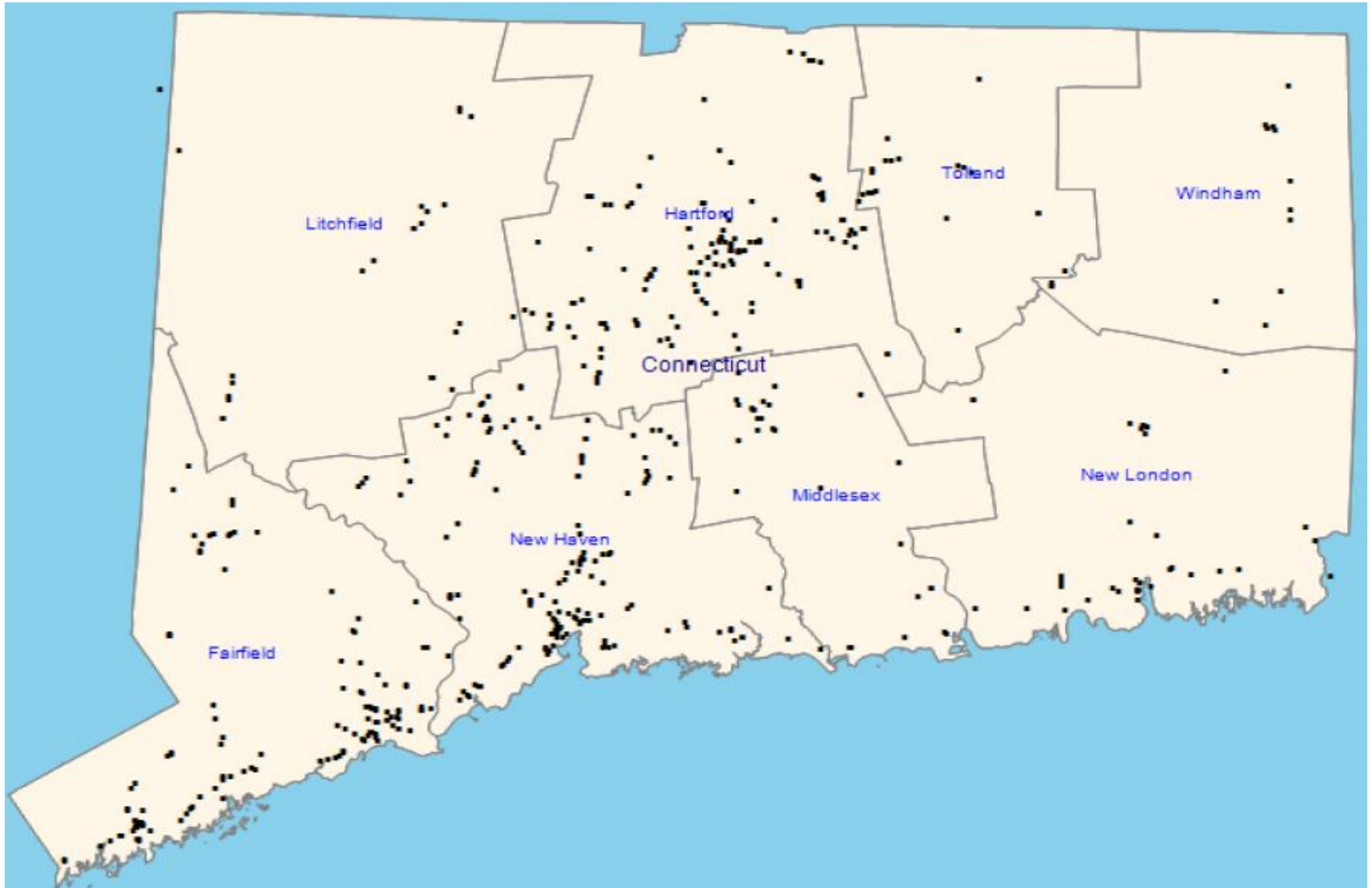
PCMH Total Participating Providers/Practitioners by Quarter
Quarter ending December 2017 through December 2021





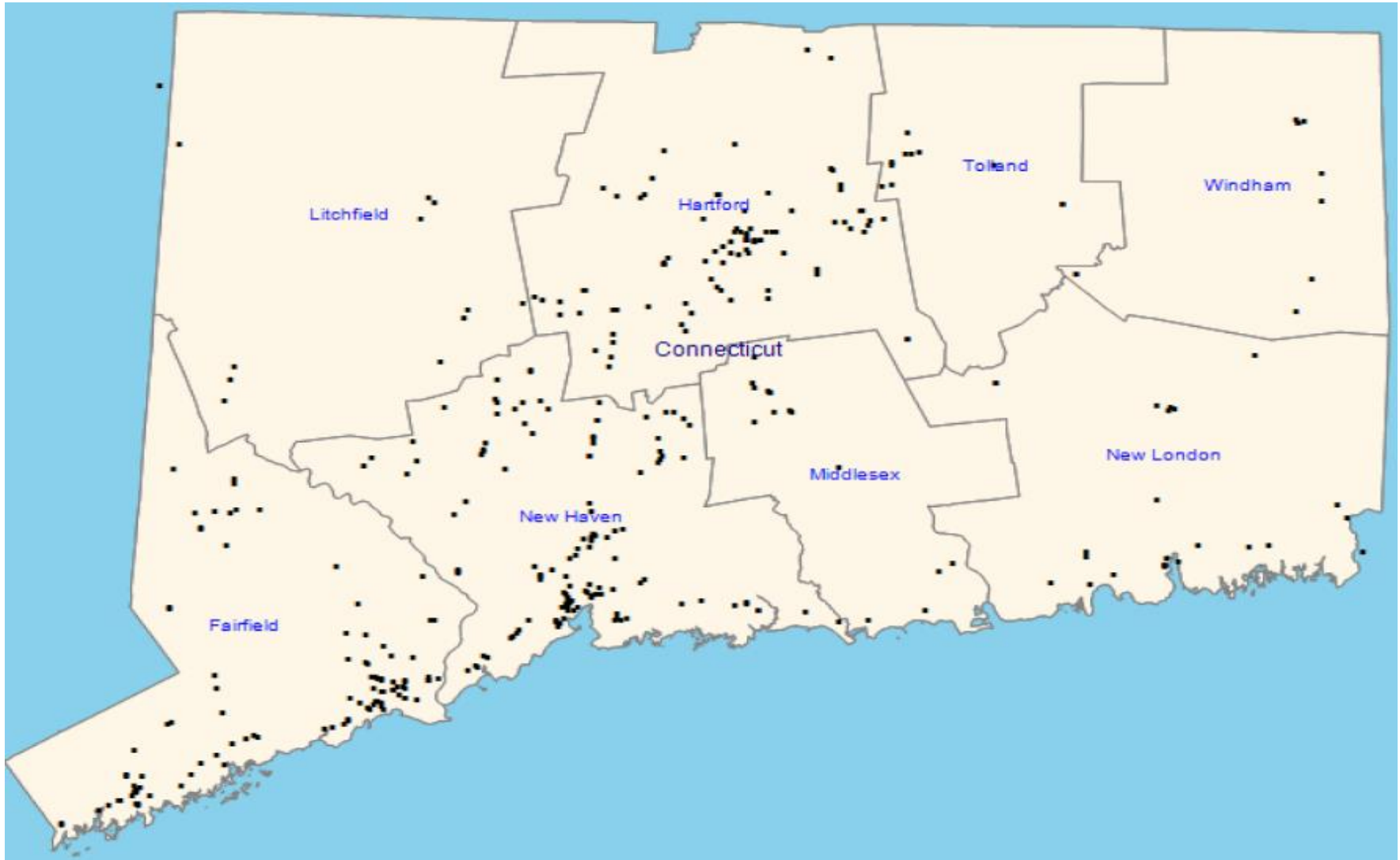
PCMH Practice Site Locations

All PCMH Program Practice Site Locations



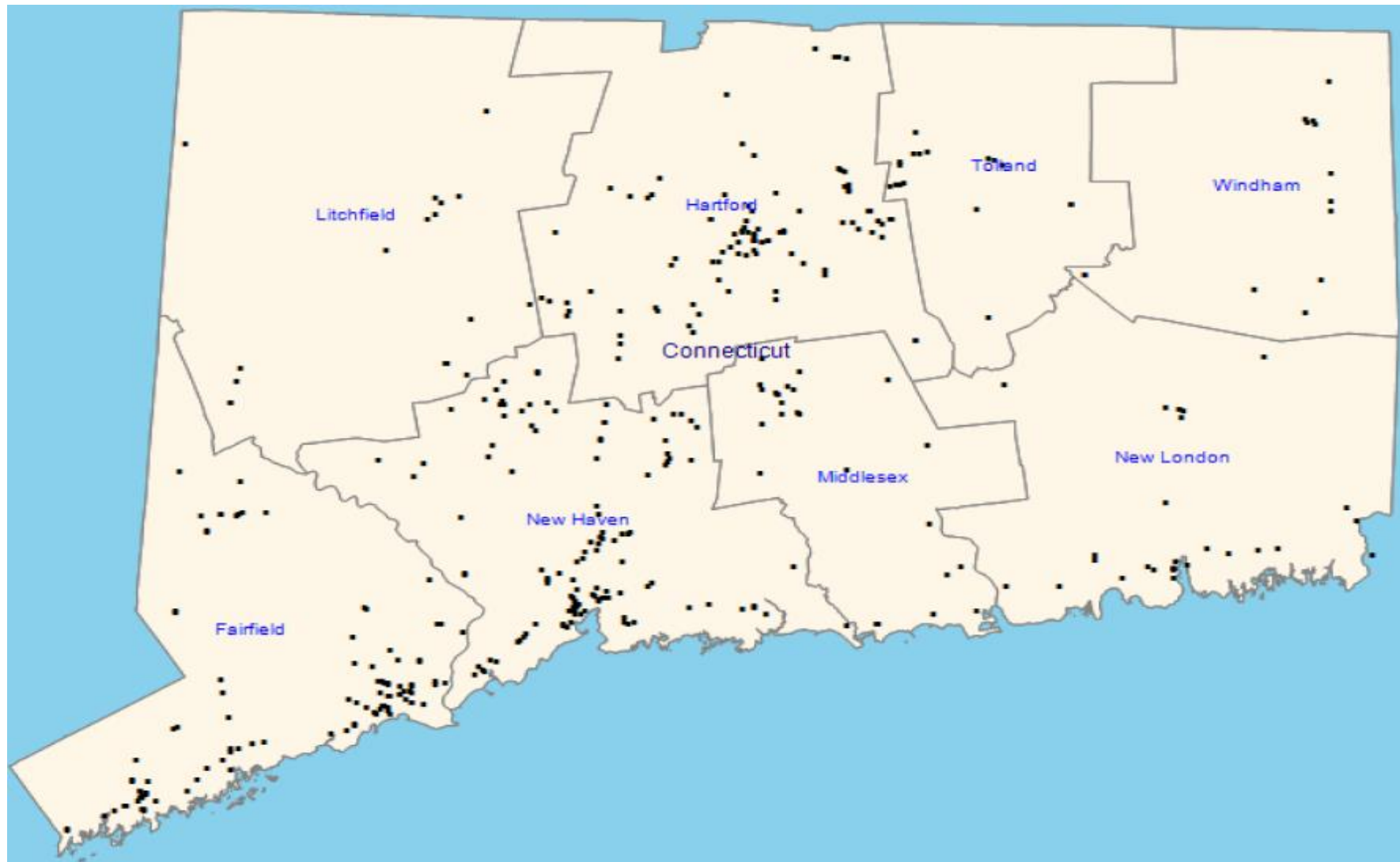
Note: Data is as of December 31, 2021 – Maps are updated quarterly.

Internal Medicine PCMH Program Practice Site Locations



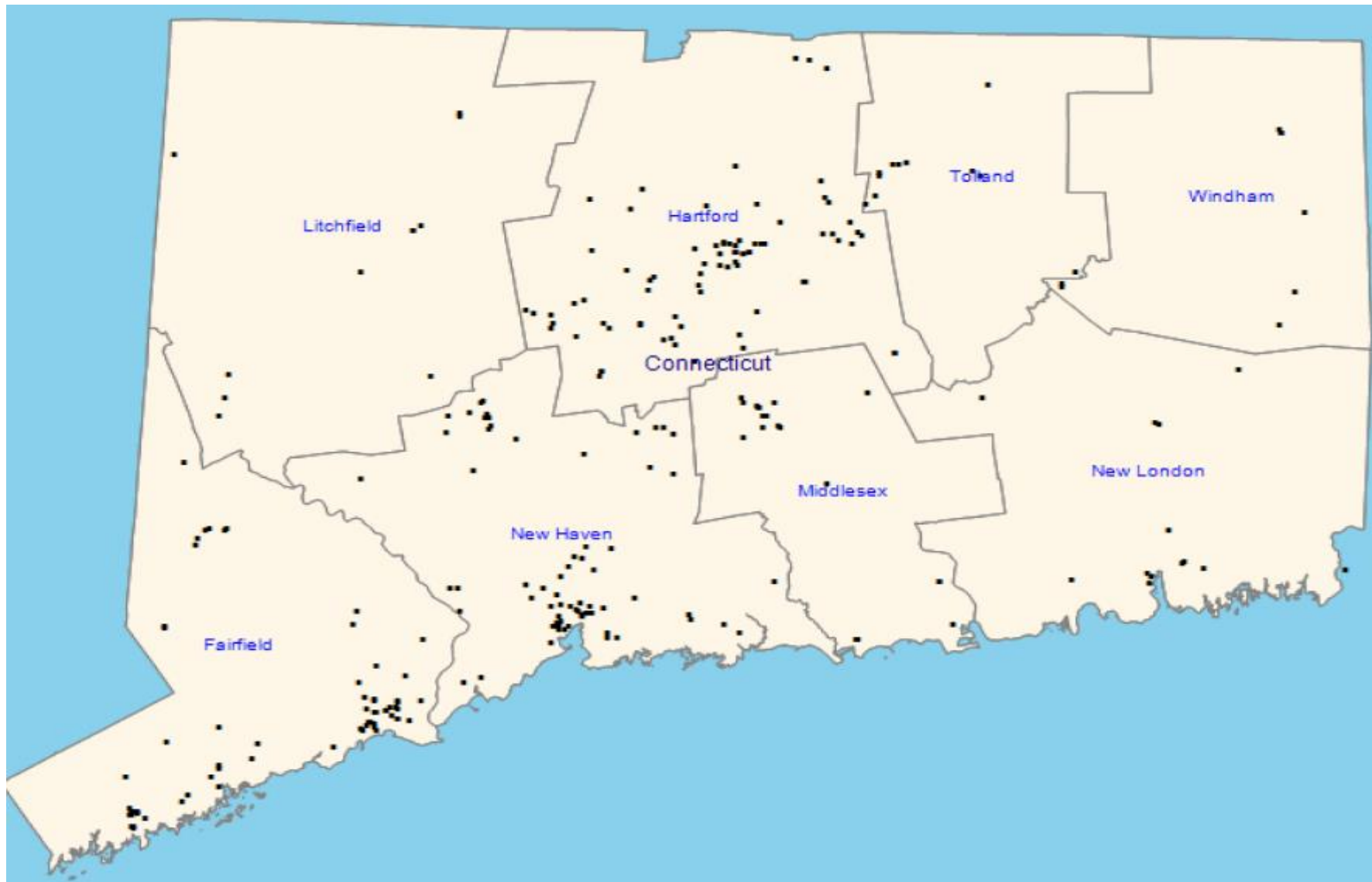
Note: Data is as of December 31, 2021 – Maps are updated quarterly.

Family Practice PCMH Program Practice Site Locations



Note: Data is as of December 31, 2021 – Maps are updated quarterly.

Pediatric PCMH Program Practice Site Locations



Note: Data is as of December 31, 2021 – Maps are updated quarterly.